

**INDUSTRIAL
PRODUCTION, ESTIMATION AND
UTILIZATION OF
PHYTOCONSTITUENTS**

**GALGOTIAS
UNIVERSITY**

Disclaimer

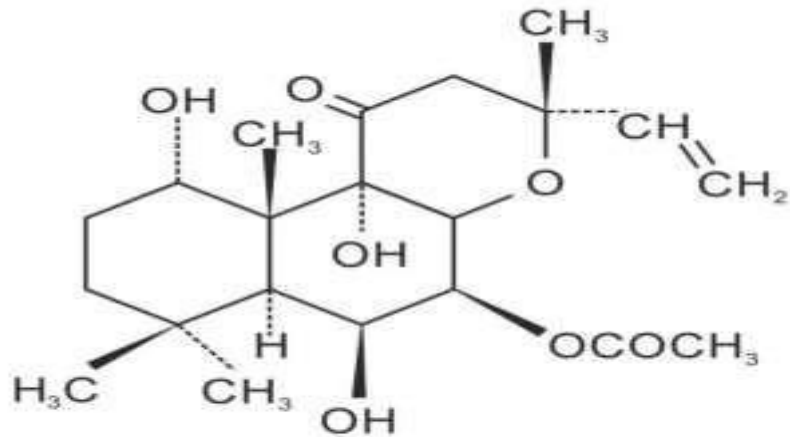
All the content material provided here is only for teaching purpose.

The logo of Galgotias University is a stylized circular emblem. It features a large, light-colored outer ring. Inside this ring, there are three curved, overlapping bands in shades of yellow, light blue, and light pink, creating a sense of motion or a spiral. The overall design is clean and modern.

GALGOTIAS
UNIVERSITY

FORSKOLIN

Biological Source: Labdane diterpenoid extracted from roots of *Coleus forskohlii*, family- Lamiaceae.



Chemical Structure of Forskolin



- **Industrial Production:**

1

- Roots & bark powder extracted with toluene at 60°C for 2 hours.

2

- Filtrate collected & concentrated at temperature not exceeding 40°C.

3

- Concentrated extract mixed with n-hexane, yields crude forskolin in the form of brown ppt.

4

- Purified using column chromatography.

- **Estimation:**

TLC & HPTLC

Mobile phase – Toluene: ethyl acetate (8.5: 1.5 v/v)

Stationary phase- Silica gel F254

Visualizing agent- 5% vanillin in glacial acetic acid and 10% sulphuric acid in water.

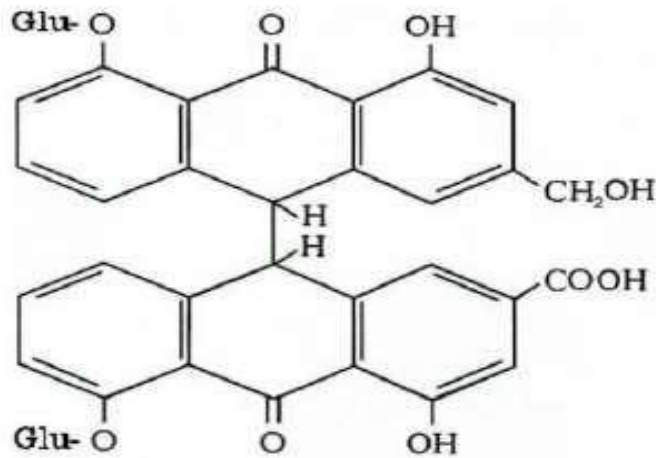
- **Utilization:**

1. Antidepressant
2. Vasodilating
3. Antiobesity
4. In glaucoma
5. Antiasthmatic

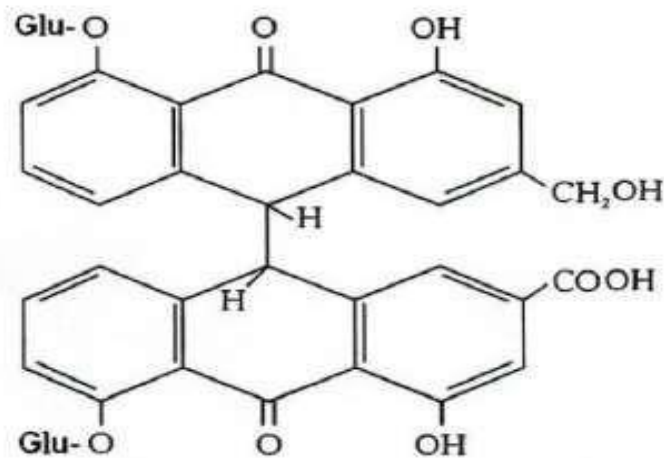
SENNOSIDES

- **Source:** Dianthrone glycosides, leaflets of *Cassia angustifolia* (Indian senna) & *C. acutifolia* (Alexandrian senna).

Family- Leguminosae.



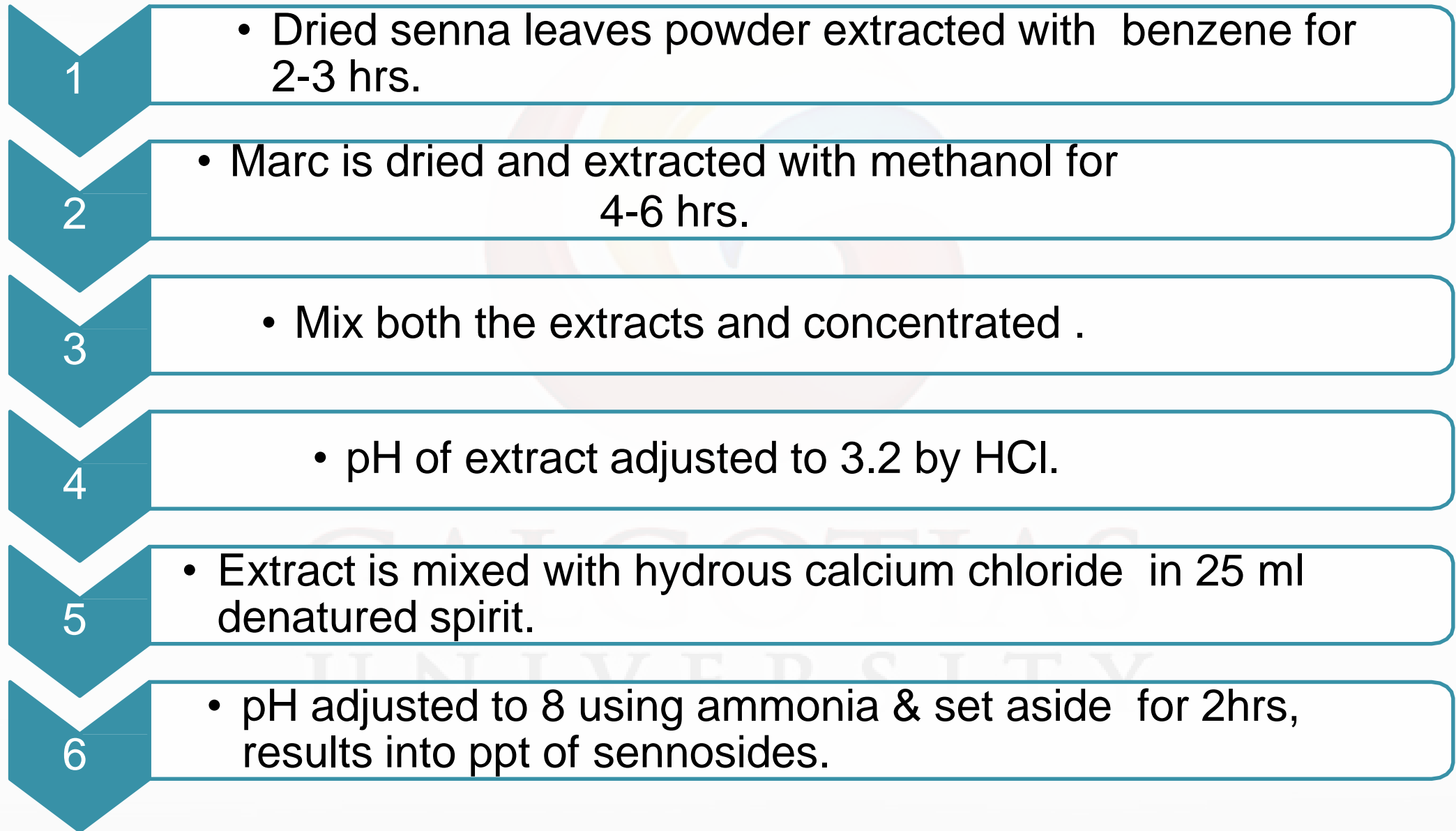
Sennoside A



Sennoside B



- **Industrial production:**



- **Estimation:**

Column- C18

Mobile phase- 1% acetic acid in water:
Acetonitrile (82:18)

Flow rate- 1ml/min

Detection- 350 nm

- **Utilization:**

1. Treatment of constipation
2. In skin diseases
3. As an anthelmintic
4. Useful in loss of appetite, dysentery, indigestion, malaria, jaundice, gout, rheumatism & anaemia.

Senna leaves are powdered to 20-40 mesh and loaded into vertical/ continuous extractors. Acetone at ambient temperature is circulated through the material to remove adherent impurities of pesticides, and other acetone soluble unwanted material of no therapeutic value. It is then made free of acetone and extracted with 70% V/V alcohol (ethyl or methyl) preadjusted to pH 3.9 with citric acid at temperature 45-50°C.

The extraction is continued till washing show a positive test for anthraquinones glycosides (colour reaction or TLC). After extraction, the marc is desolventised and discarded. The extracted liquid is filtered and transferred to a tank fitted with stirrer. The pH is adjusted to 6.0-6.2 with limewater. It is then concentrated to a paste of 65-70% total solids in a multiple effect evaporator. The paste is dried in rotary vacuum drier at temperature 50-55°C. The flakes obtained are pulverized to a fine powder. It is then sifted to 80 mesh and packed preferably by vacuum sealing.

Utilization of sennosides:

1. Purgative.
2. Treatment of constipation.

Isolation of calcium sennosides:

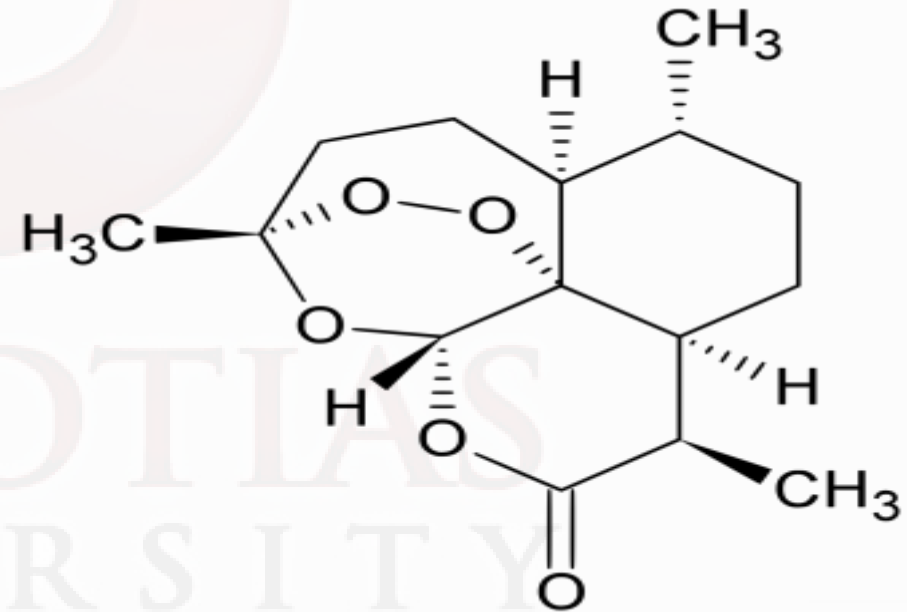
The senna leaves are powdered to 40 mesh in a pulverizer and fine powder is removed by sifting. It is then extracted in vertical extractors placed in a row, using 80-90% V/V methanol and adjusted to pH 2.9 with any organic acid as extraction medium. The solvent is circulated intermittently for 6-8 hrs. at 40-45°C. The solvent is then transferred to a storage tank. One more extraction is carried out as above the solvent is collected in the same storage tank. It is then taken to a reactor fitted with stirrer (20-30 rpm) through sparkler filter.

The filtered liquid is adjusted to pH 3.7- 3.9 with ammonia. After adjusted the pH, the liquid is stirred for 30-45 minutes and then allowed to stand for one hour. The precipitate thus formed is removed by filtration and clear liquid is transferred to a tank fitted with stirrer of 90 rpm. It is made up with methanol so that the final concentration of methanol is reached 80% V/W in solution and filtered. 10% solution of stoichiometric amount of calcium chloride in methanol is then added.

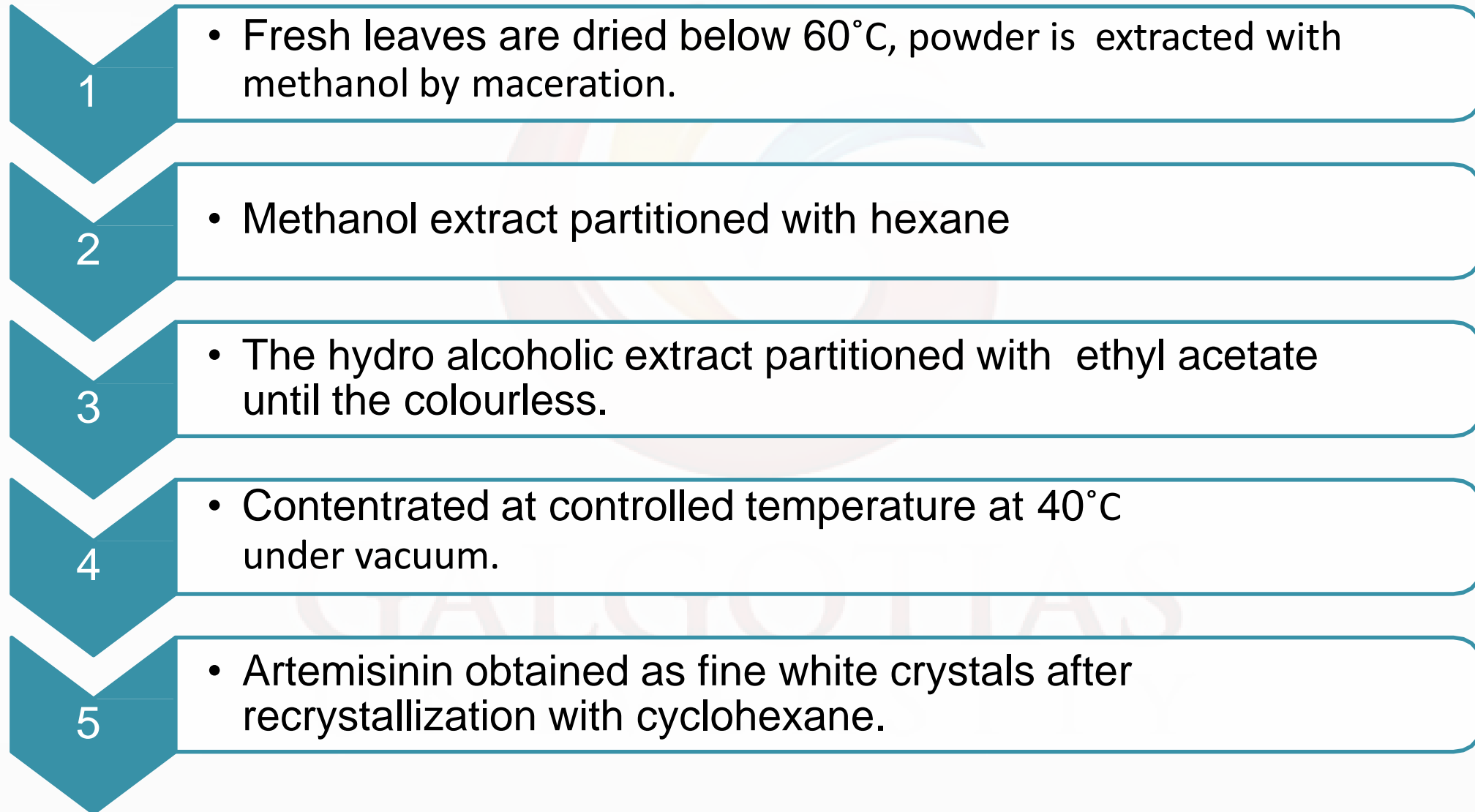
The content is stirred for 1 hr and then liquor ammonia 30% is added with stirring to pH 6.5-6.8. The stirring is continued until pH is stabilized. It is left for one hr for complete precipitation of sennosides as calcium salts. The precipitate is filtered in a drum/leaf filter and washed with chilled methanol till pH of filtrate becomes almost neutral. Final washing with methanol, adjusted at pH 6.5 with ascorbic acid, is given. The precipitate is then quickly dried under vacuum at temperature not more than 50°C till the moisture is reduced to less than 3% in flakes. The flakes are pulverized to fine mesh and packed

ARTEMISININ

- **Source:** sesquiterpene lactone obtained from the leaves & unexpanded flower heads of *Artemisia annua*.
Family- Asteraceae.



- **Industrial production:**



- **Estimation:**

HPLC & HPTLC method

Mobile phase- n-hexane : ethyl acetate (7.5:
2.5 v/v)

Stationary phase- silica gel F254

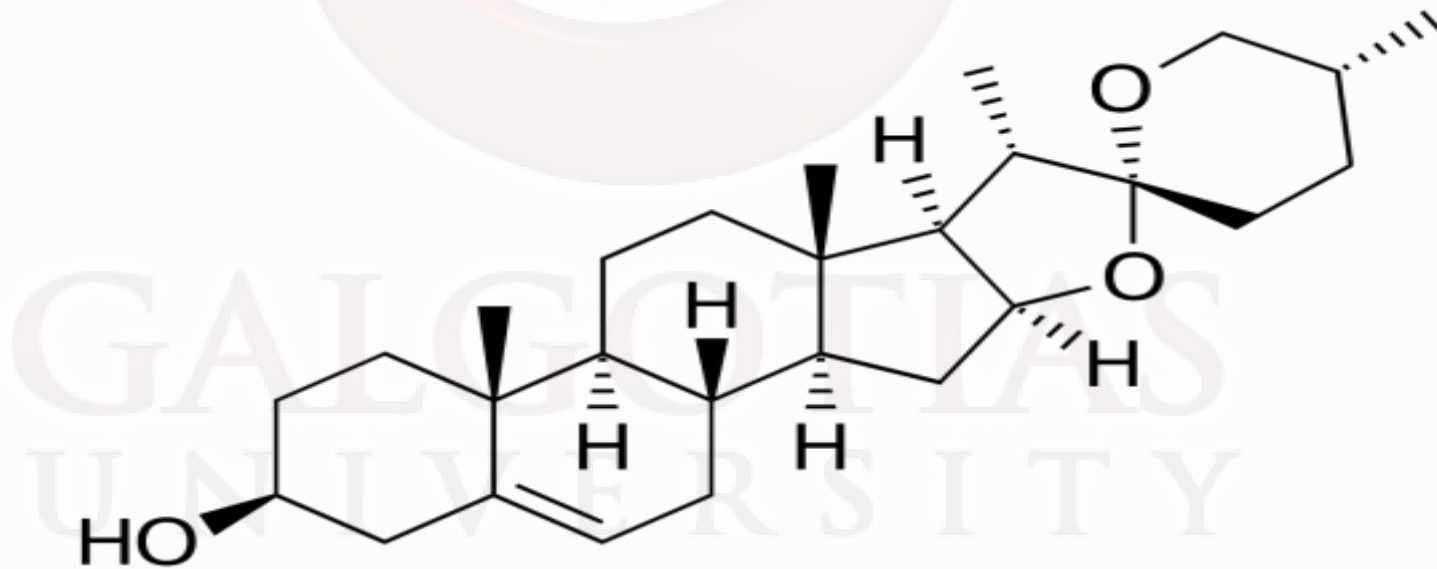
Visualizing agent- anisaldehyde sulphuric acid reagent
followed by heating to 110°C.

- **Utilization:**

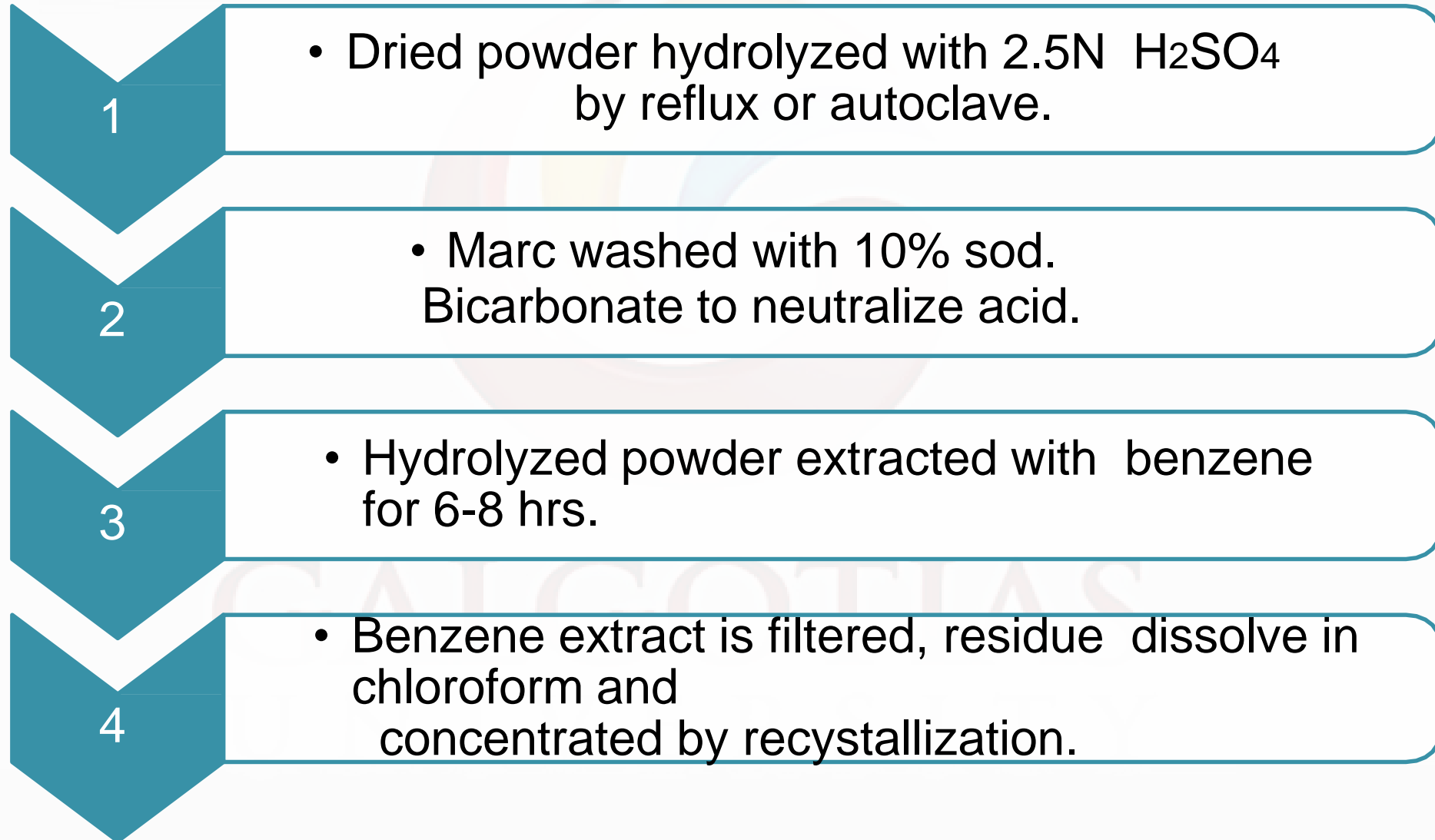
1. Antimalarial
2. In gastric infections
3. Suppress inflammatory immune reactions
4. Anticancer

DIOSGENIN

- **Source:** Aglycone hydrolysis obtained after the of steroidal saponin glycoside dioscin present in *Dioscorea deltoidea*, *D. composite*. Family- Dioscoreaceae.



- **Industrial production:**



- **Estimation:**

HPTLC method

Mob. Phase- toluene: ethyl acetate: formic acid (5:4:1)

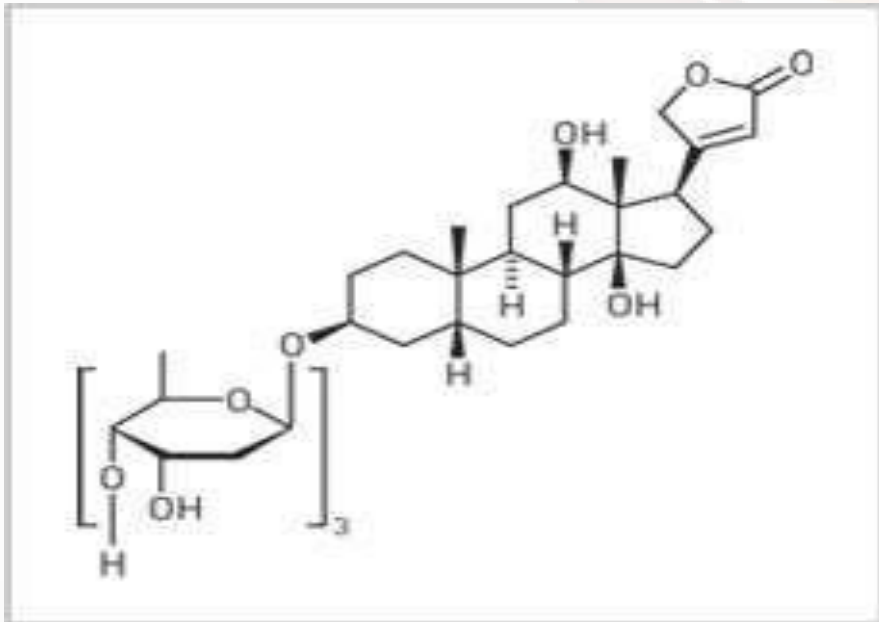
St. phase- Silica gel F₂₅₄

- **Utilization:**

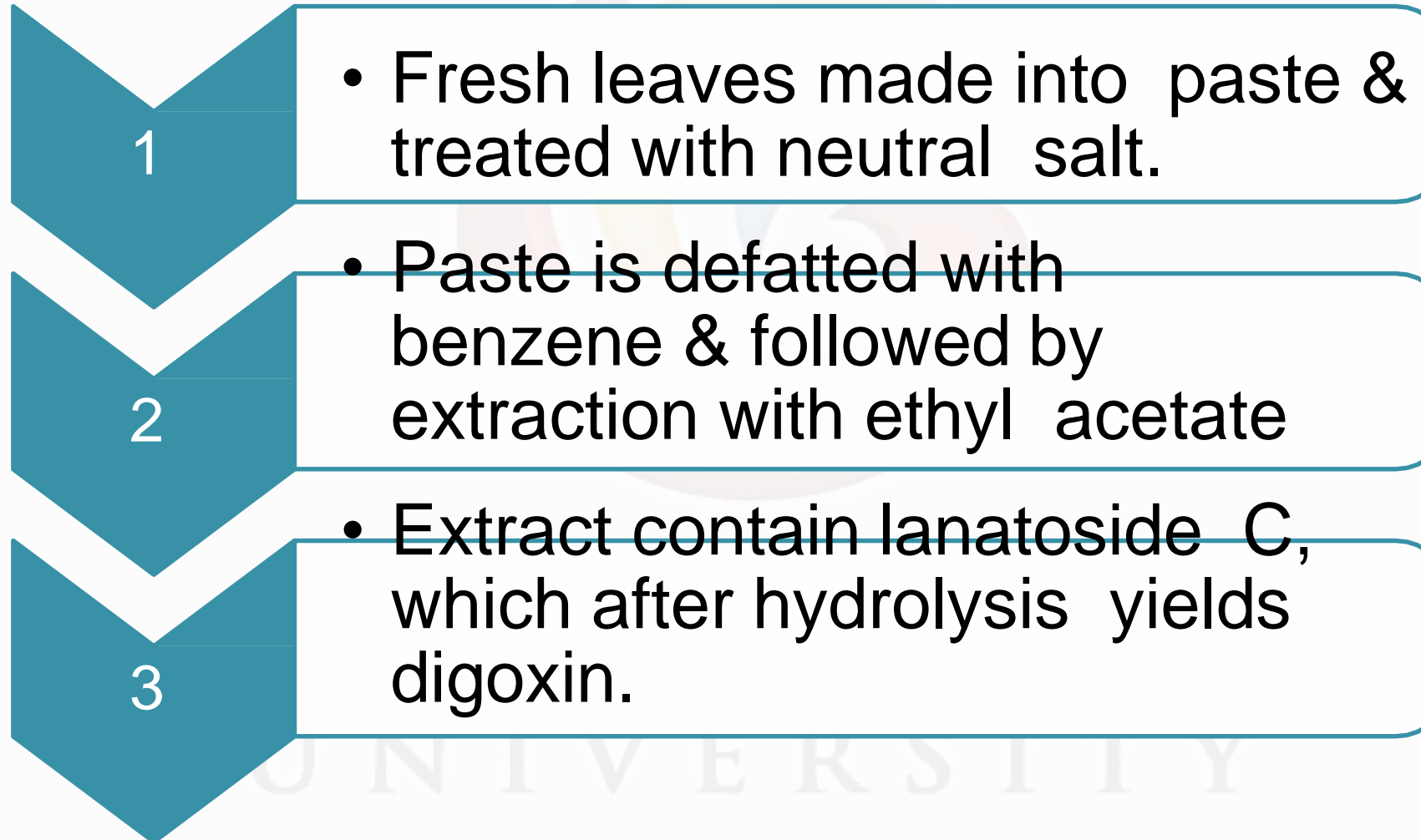
1. As a precursor for steroidal synthesis
2. In preparation of oral contraceptives
3. In treatment of rheumatism.

DIGOXIN

- **Source:** Cardiac glycoside obtained from leaves of *Digitalis lanata*.
- Family- Scrophularia



- **Industrial production:**



- **Estimation:**

Assay- 40 mg test & std solution of digoxin dissolve in sufficient ethanol.

5 ml of resulting solution, add 3ml picric acid solution.

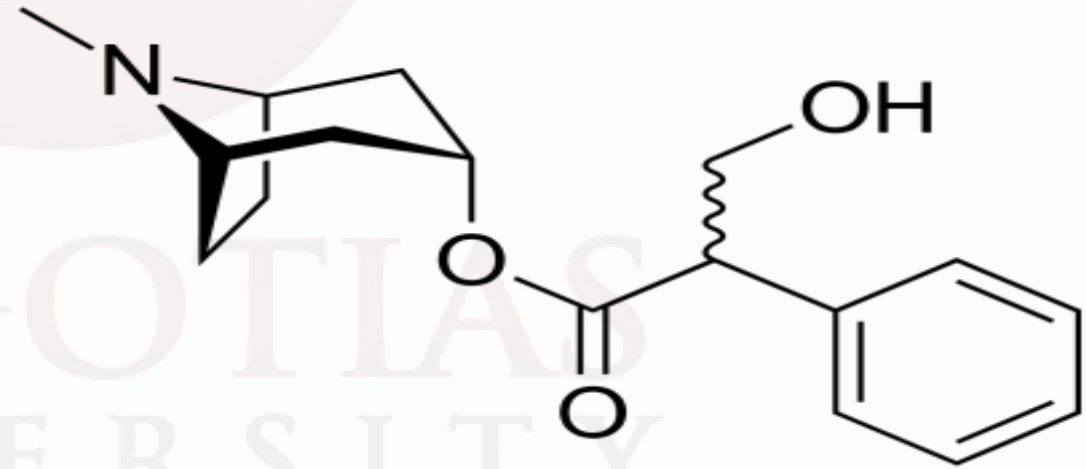
Measure absorbance at 495 nm.

- **Utilization:**

treatment of cardiac disorders.

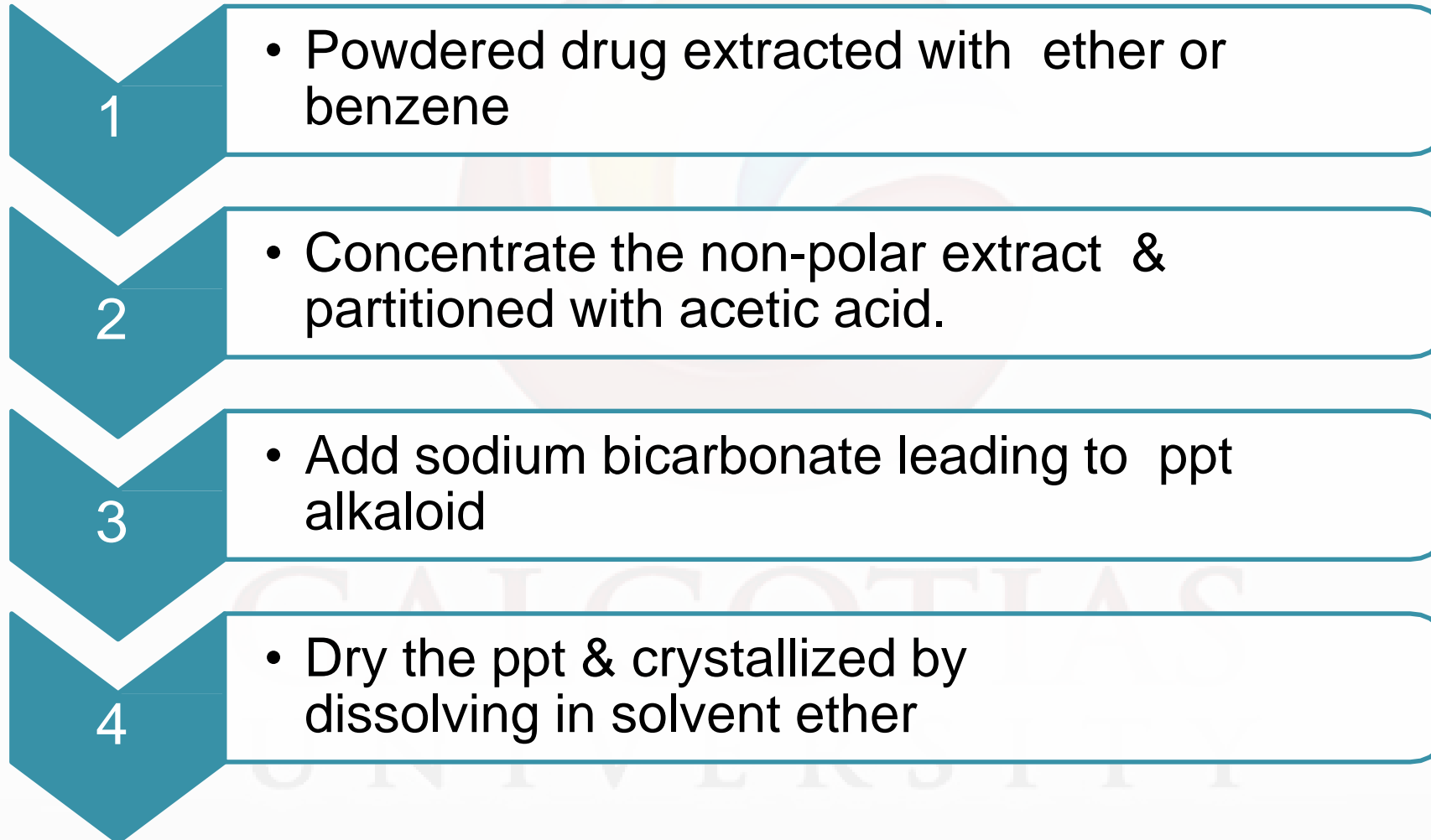
ATROPINE

- **Source:** tropane alkaloid, flowering tops of *Atropa belladonna*, *Datura stramonium* & *Hyoscyamus niger*.
- Family- Solanaceae.



GALGOTIAS
UNIVERSITY

- **Industrial production:**



- **Estimation:**

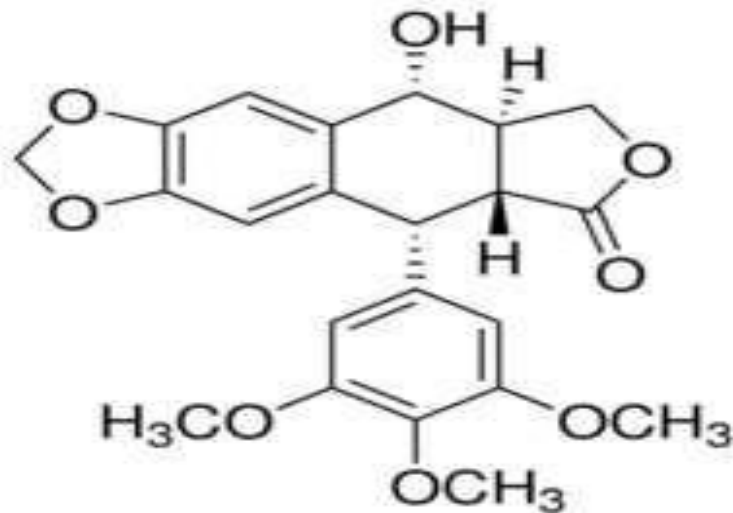
Assay- sulphate salt of atropine titrated against 0.1 N perchloric acid.

- **Utilization:**

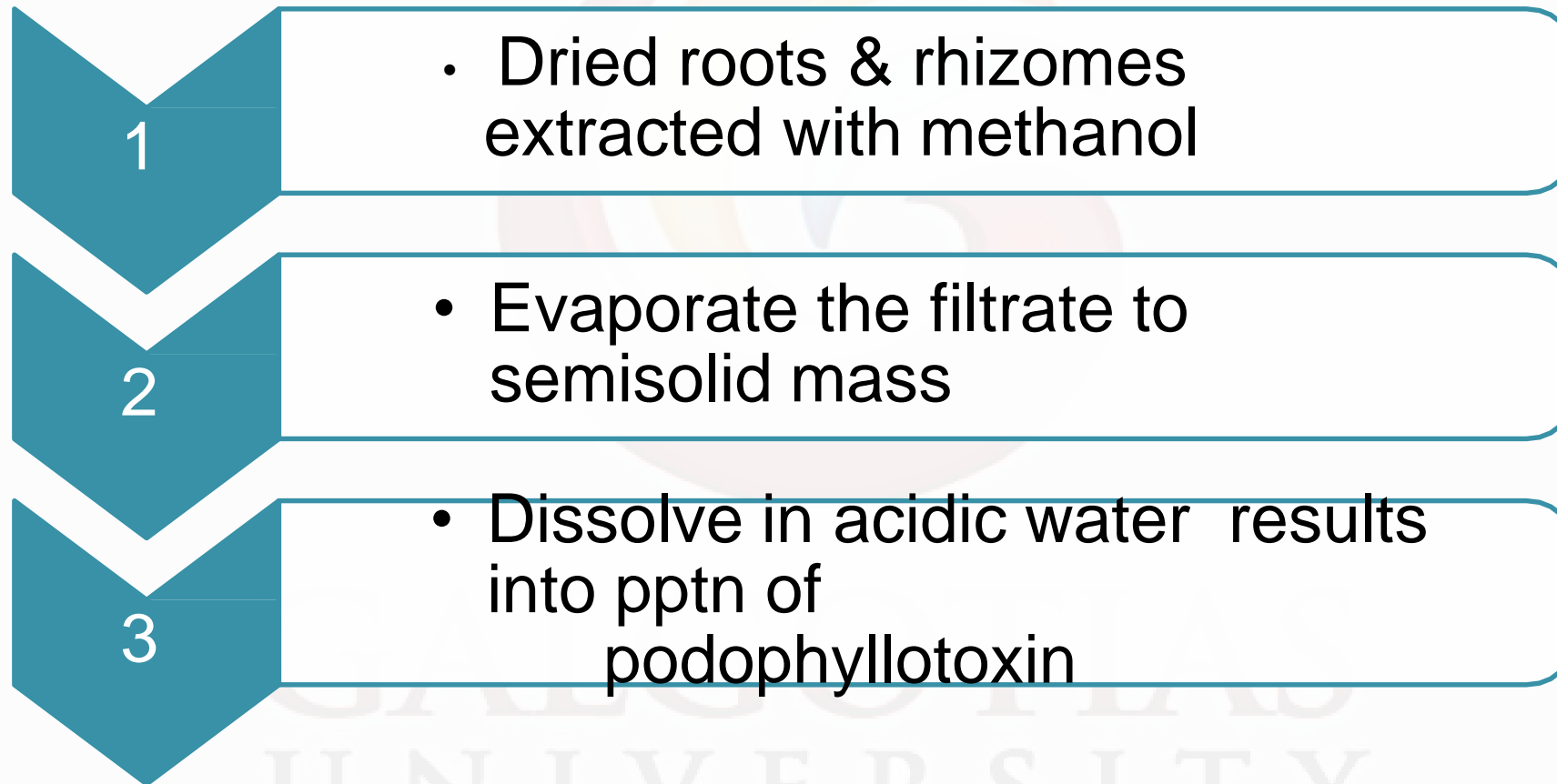
1. As preanesthetic medication
2. Antispasmodic

PODOPHYLLOTOXIN

- **Source:** resin, roots & rhizomes of *Podophyllum hexandrum*, *P. emodi* & *P. peltatum*.
- Family- Berberidaceae.



- **Industrial production:**



- **Estimation:**

HPLC

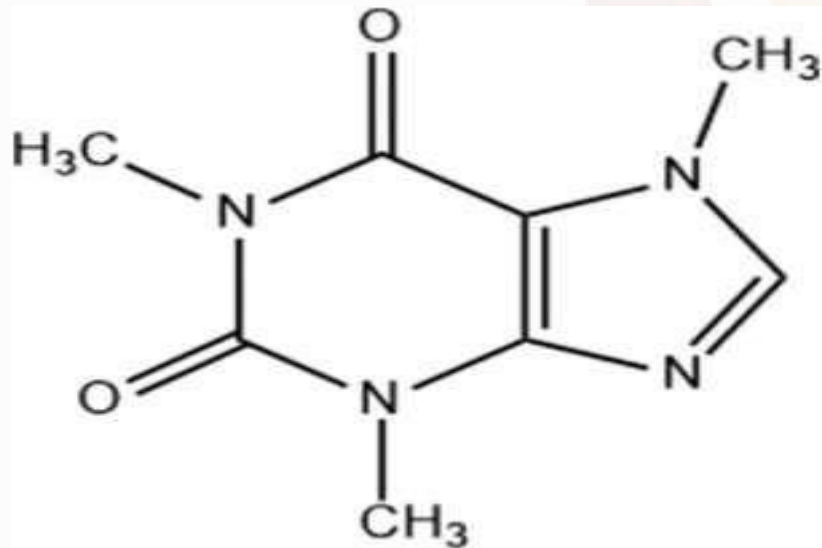
Mob. Phase- methanol: water (62: 38 v/v) Detector wavelength- 280nm.

- **Utilization:**

1. Antitumour
2. Purgative
3. Emetic
4. Treatment of warts

CAFFEINE

- **Source:** xanthine alkaloid, leaves of
Camellia *sinesis* (Theaceae), seeds of
Coffea arabica (Rubiaceae).



GOTIAS
UNIVERSITY

- **Production:**

1

- Leaflet powder boiled with 2% sodium carbonate water for 10 min & filtered.

2

- Evaporate & partitioned with dichloromethane

3

- Evaporate to get crystals of caffeine.

4

- Purified by recrystallization from hot ethanol.

- **Estimation:**

HPLC method

Mob. Phase- methanol: acetonitrile (65: 35 v/v)

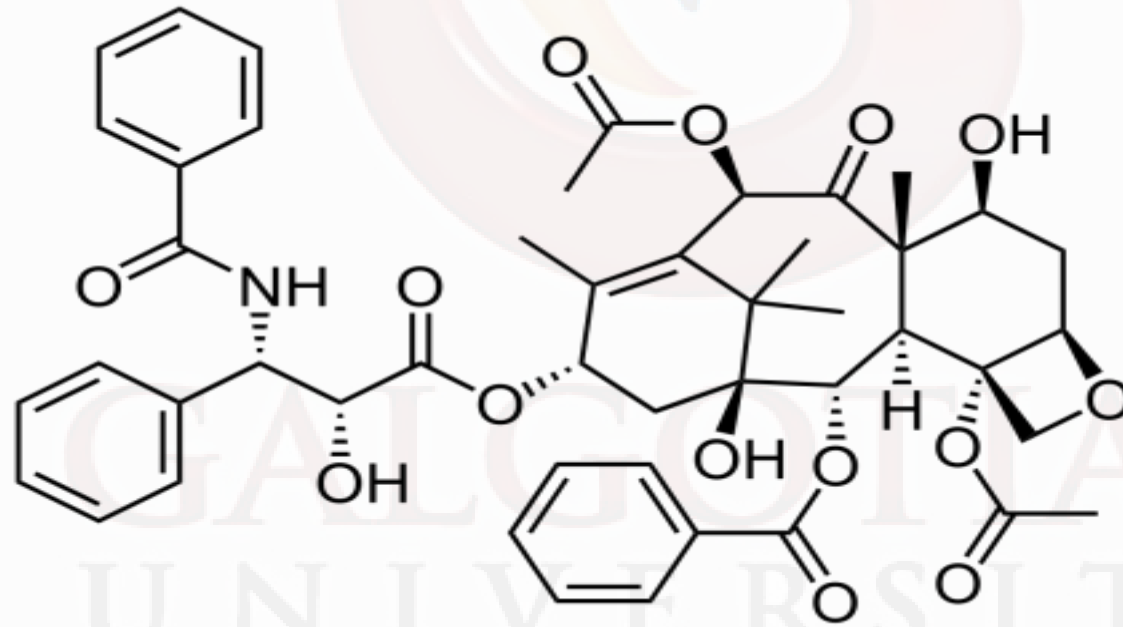
Column- C18

- **Utilization:**

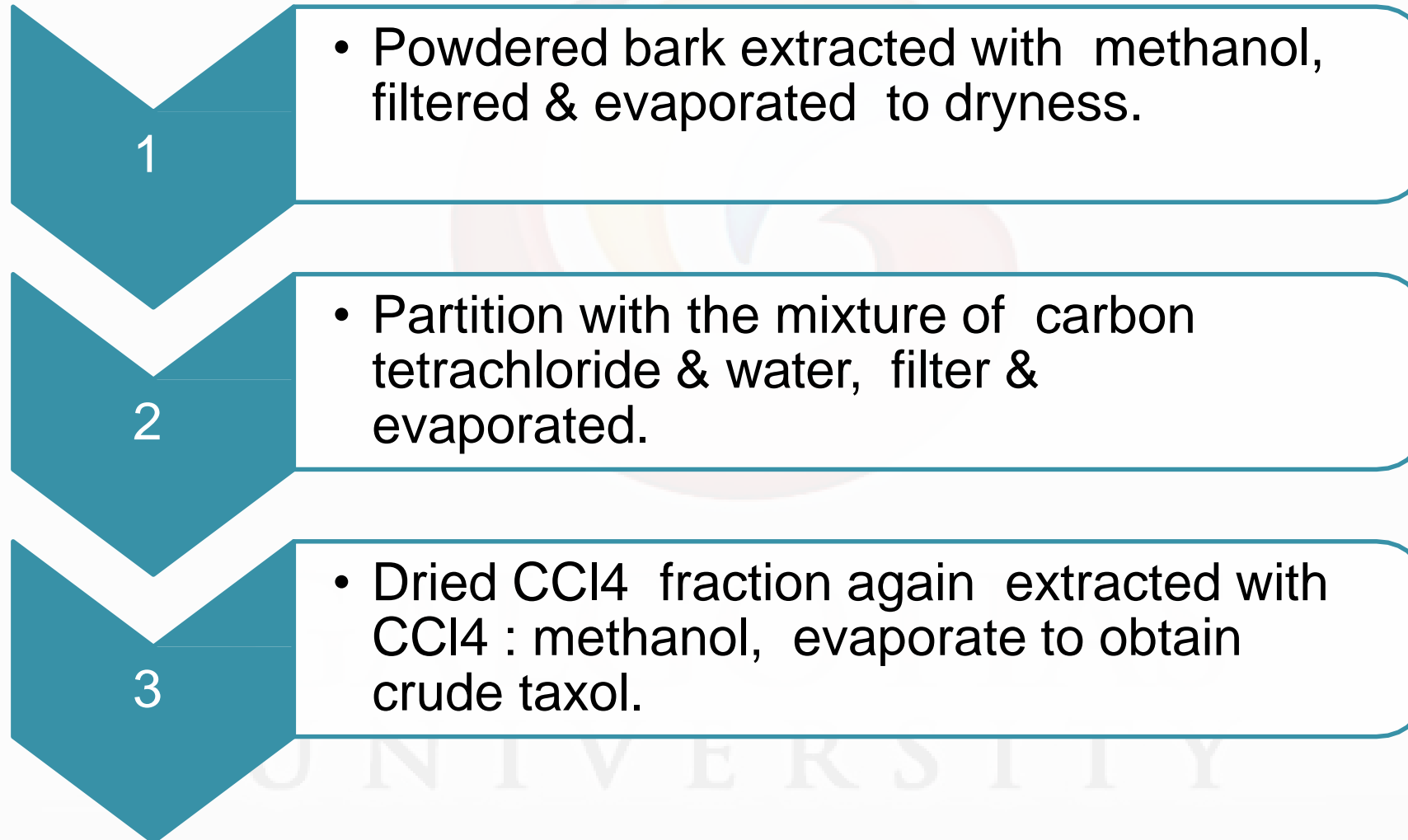
Stimulant

TAXOL

- **Source:** nitrogen containing subs, bark of *Taxus brevifolia*, fam- taxaceae.



- **Production:**



- **Estimation:**

HPTLC method

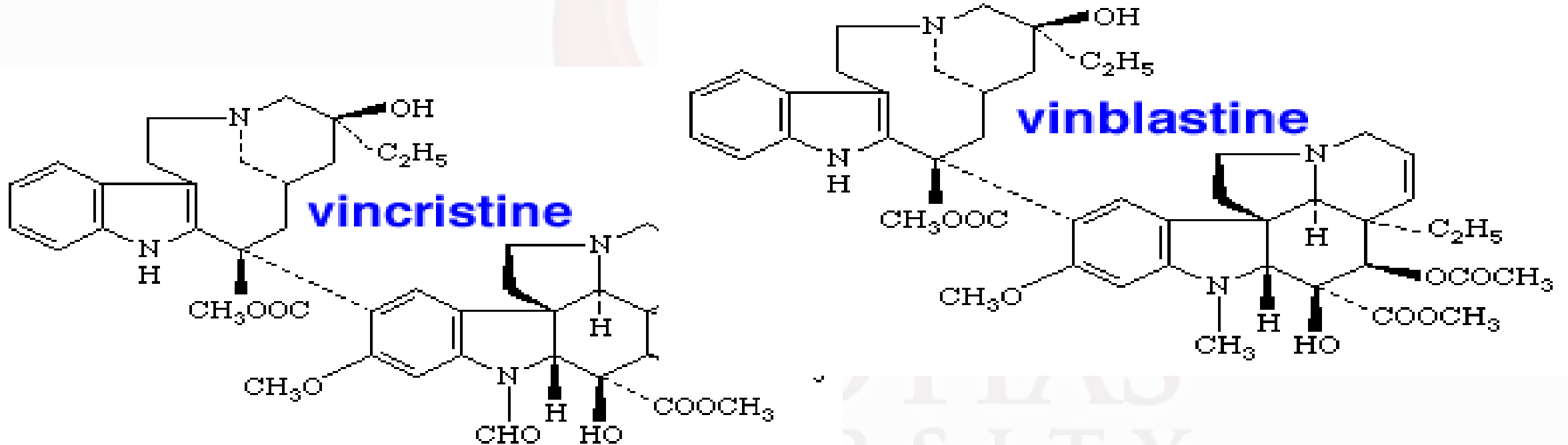
Mob phase- chloroform:methanol (7:1v/v) Visualizing agent- vanillin sulphuric acid.

- **Utilization:**

1. Treatment of ovarian, lung, bladder, esophageal & other types of cancers.
2. Antiproliferative agent.

VINCRISTINE & VINBLASTINE

- **Source:** Indole alkaloid, *Vica rosea*, family- Apocynaceae.



VINCRIStINE & VINBLASTINE

- **Production:** Plant tissue culture technique.
- **Estimation:** HPLC method
Mob phase- acetonitrile: 0.1 M phosphate buffer.
Wavelength- 254nm.
- **Utilization:**
 1. In chemotherapy regimens
 2. Childhood leukemia
 3. immunosuppressant

The logo of Galgotias University is a stylized, multi-colored swirl or 'G' shape. It features a gradient of colors including yellow, orange, red, and blue, with a white center. The swirl is composed of several curved segments that create a sense of motion and depth.

THANK YOU

GALGOTIAS
UNIVERSITY